

# ArtReach Alliance 2006 Annual Report

## Letter from the Director

Last year, ArtReach programs and events connected more people with the arts, and I am pleased to report on just a few of the achievements that our board, volunteers, and community members made possible.

More than 18,000 people attended or participated in events that ArtReach helped to connect the community with in 2006. This is an astonishing number, highlighting our community's value of the arts. Whether visual arts, theater, music or literature, our community loves to be involved, create and enjoy the arts.



Kendra Schwabel

ArtReach Alliance is the only arts organization in the greater Stillwater area that provides education, communication, promotion, ticketing, and experiential opportunities to both artists and the greater public. We have a demonstrated history of being a leading force in collaborative activities in the arts, as well as nurturing other emerging arts activities. It is the only arts organization that nurtures not only the arts – but artists as well. In 2006, ArtReach programs served over 300 artists.

Generous contributions in 2006 ensured that programs were available and accessible to local audiences. The community support for the programs and activities of ArtReach Alliance allow us to provide many events free to the community. Donations of money, time, and talent from our friends and neighbors made these events possible. Thank you!

The arts have deep roots in the greater Stillwater area, with the history of an Arts Colony dating back to the 1930s. Over our fifteen year history we have matured in many ways, beginning with a focus on visual arts. Today we host events in literature, music, and the visual arts. And now, ArtReach stands poised to build on its history and growth. We offer multi-disciplinary programs that serve artists of all media as well as arts organizations and patrons. Families and individuals come together to create, experience, learn and enjoy art together. Our guiding vision is to be the premier Stillwater area nonprofit organization **connecting the community and the arts.**

Thank you for helping us through this journey. We are looking forward to continuing to meet the growing needs of our community. We will do it together and we will do it well!

Jessica Pack, Executive Director



Thank you to our

## 2006 Event Sponsors

Family Festival  
**Lake Elmo State Bank**  
Local Folk Concert  
**Brookside Bar & Grill**  
**Bread Art**  
**Ranum Law Offices**  
**Stillwater Music**  
**Marine General Store**



Peter Mayer, photo by Rob Meyer

Family Art Activities  
**Shaw Family Foundation**  
**Community Power Program**

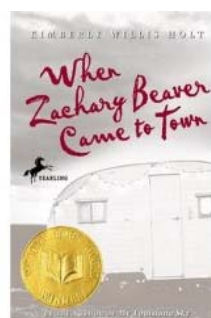
Bluegrass Festival  
**Dr. John Reardon**

Art in the Park  
**Friends of Stillwater Parks**  
**Curtis Dale Photography**  
**Creative Art Supply**  
**Bead Alley**  
**Jennings State Bank**  
**EQ Life**  
**The Lowell Inn & Grand Pizza**  
**Stillpoint**

Stillwater Historic Home Tour  
**Stillwater Living Magazine**  
**The Landmark Group of Thrivent Financial**  
**Linda Besk & Lynn VanOrsdale: Edina Realty**  
**Central Bank**  
**Cub Foods**  
**Art n' Soul**  
**Valley Floral**

Festival of the Arts  
**Cummins Law Office**  
**Huntington Learning Center**  
**Spiritworks Pottery**  
**Grand Salon & Gallery**  
**Office Systems & Design**

St. Croix Jazz Orchestra  
**Andersen Corporation**  
**Curtis Dale Photography**  
**Lake Elmo Inn Event Center**  
**Stillwater Living Magazine**  
**First State Bank of Bayport**  
**Musicians' Union**



Valley Reads  
**Hugh J. Andersen Foundation**  
**St. Croix Valley Community Fdn.**  
**Stillwater Rotary Club**  
**Hudson Rotary Club**  
**Bayport Library Foundation**  
**Friends of Stillwater Public Library**  
**Pioneer Press**  
**Stillwater Women's Reading Club**  
**Arcola Mills**  
**Lowell Inn**

# ArtReach Alliance 2006 Annual Report, cont.

## Programs and Collaborations

ArtReach Alliance continually seeks to meet the community needs through programming throughout the year.

We host most **visual, music and literary arts events.**

### Music concerts/festivals:

- o **St. Croix Jazz Orchestra**
- o **Local Folk concert** – with Peter Mayer in June 2006.
- o **Family music events** - Family Festival and Bluegrass Festival with Washington County Parks.
- o **Lumberjack Days Talent Show** with Washington County.
- o **Stillwater Music Festival and Panorama Jazz** – we partner with and support performers and groups to bring world-class concerts to the community.

### Visual Art Shows:

- o **Artist Member Shows**
- o **Experience of Place**
- o **Annual Festival of the Arts**
- o **Annual High School Juried Show**
- o **Historic Home Tour**

**Valley Reads:** Over 30 events, 12 community partners and reaching over 15,000 community members.

Provide **professional development for artists** through networking groups and classes.

Develop **arts audiences of all ages.**

- o **Hands on the Arts Activities:** at community events, parks & festivals.
- o **Art in the Park:** In 2006, over 450 people participated
- o **Schools:** ArtReach works with the Partnership Plan to produce an artists in the schools resource directory. We also participate in the Art to Heart event.
- o **Summer Tuesdays:** Collaboration with Stillwater Area Chamber of Commerce. This 7 week program offers a market, music, & outdoor films to over 3,500 community members.



## 2006 DONORS & CONTRIBUTORS

### Foundation Support

Hugh J. Andersen Foundation  
Margaret Rivers Fund  
Fred & Katherine Andersen Foundation  
The Bayport Foundation  
City of Stillwater  
St. Croix Valley Community Foundation

### Louis Armstrong Level

Robert Knapp & Christine Herman  
Curtis & Janice Hargadine

### Beethoven Level

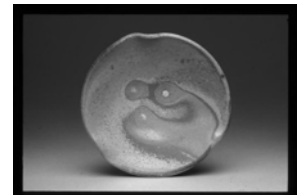
Stillwater Rotary Club  
Sarah Andersen & Christopher Hayner  
Culver & Judith Davis  
Jammi Hansen Blair & Sean Blair  
A.R. Kircher  
Meta Stillwater Inc.  
Paul & Karen Richtman  
Beth Ryan  
Marjorie Wade

### Picasso Level

Peggy Doeksen  
Kenneth Hannah  
Margel & Douglas Johnson  
Wendy & Brent Johnson  
O.G. Johnson  
Peter Mayer & Beth Harrison  
Mayeron Cowles/Fuller Cowles Foundation  
Scenic River Investments  
J. Shannon  
SRI  
Ann Swanson  
Mark & Marcy Syman

### Baryshnikov Level

Tom Brewitz  
Jim Gorski & Mary Lou Rice  
Craig & Karen Hansen  
Quentin & Sally Heimerman  
Richard Huelsmann  
David & Phyllis Hunter  
Daniel & Lynn Joachim  
Dick McMullen  
Janet O'Connell  
Jessica & John Pack  
Nancy & Kenneth Pedersen  
Ken & Nancy Peterson  
Phyllis Smith  
Scott & Jean Spisak  
Margie Wellman  
Richard Wilberg  
Woman's Reading Club



Marjorie Wade

## ArtReach Alliance

### Condensed Financial Statement 2006

<b>Income</b>		
<b>Earned Income</b>		<b>22,095</b>
Ticket Sales	18,816	
Events and classes	3,179	
Other	100	
<b>Contributions Income</b>		<b>5,577</b>
<b>Fiscal Agent Receipts</b>		<b>20,052</b>
<b>Membership Program</b>		<b>37,030</b>
In-Kind	20,000	
Sponsorship	6,430	
Valley Reads	10,600	
<b>General Operating Grants</b>		<b>22,300</b>
<b>Total Income</b>		<b>109,529</b>
<b>Expenses</b>		
<b>Programs</b>		<b>56,936</b>
Fiscal Agency Distributions	18,949	
Music Programming	10,967	
Valley Reads	20,597	
Visual Arts	6,423	
<b>Administration</b>		<b>22,172</b>
<b>Occupancy</b>		<b>6,487</b>
<b>Operations, Communications &amp; Fund-raising</b>		<b>8,680</b>
<b>Total Expenses</b>		<b>94,275</b>
<b>Net Balance at Year End</b>		<b>15,254</b>



Tara Burns

### Michelagnolo Level

James & Harriet Blilie  
Arlette Egan  
Carl Erickson  
Joanne Frank  
Barbara Greeder  
Kris & Jim Harvieux  
Merrily Karel  
Greg Keel and Judi Donaghy  
Floyd & Ruth Keller  
Joanne Laird  
Michelle Linnihan  
Mark Lutz  
Bonnie Marron  
Elaine Mucciocari  
Tricia Spitzmueller  
Gretchen Stein Wickenhauser  
Thomas & Kathleen Thueson  
Marie Truso

**AND TO OUR MANY FRIENDS, SILENT AUCTION DONORS, VOLUNTEERS AND ARTIST MEMBERS, THANK YOU!**